

# Alternative Concept 1: Extending the Neighborhoods

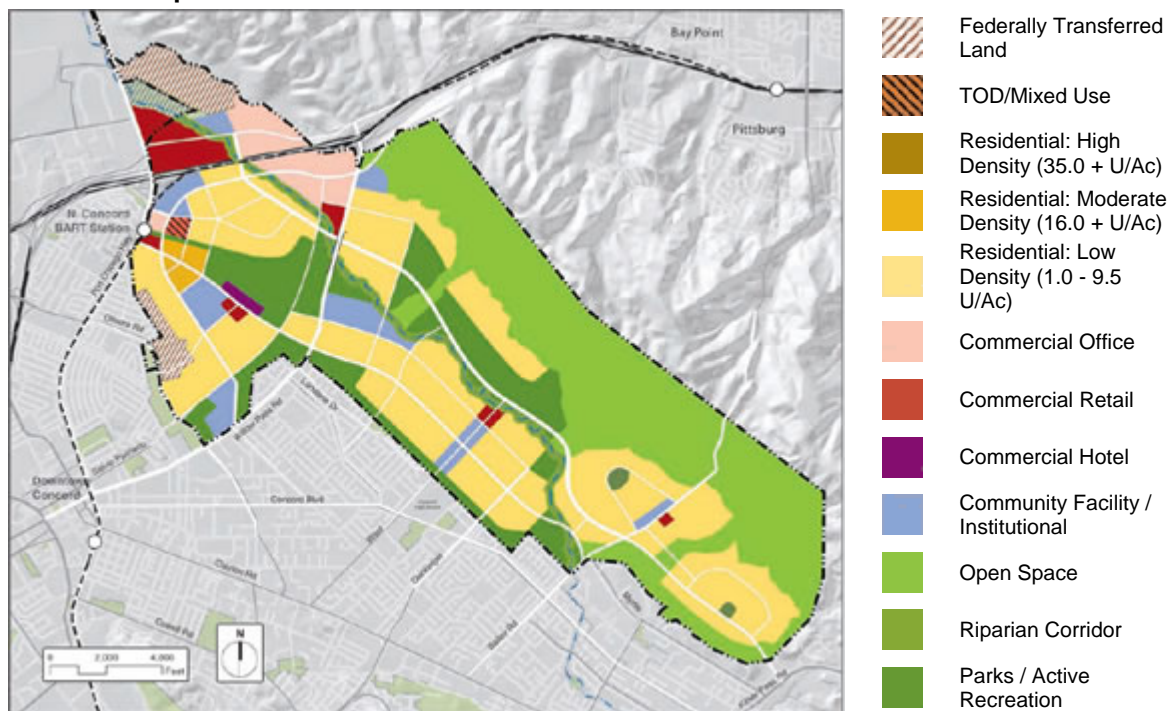
## Overview

Thirty years from now, with this alternative concept, the CNWS site will be experienced as an extension of the pattern of single-family, suburban development that is found in much of Concord today.

The Los Medanos hills along the eastern boundary of the weapons station will be preserved protecting the over 30% slopes, and a buffer along Mt. Diablo Creek will be maintained.

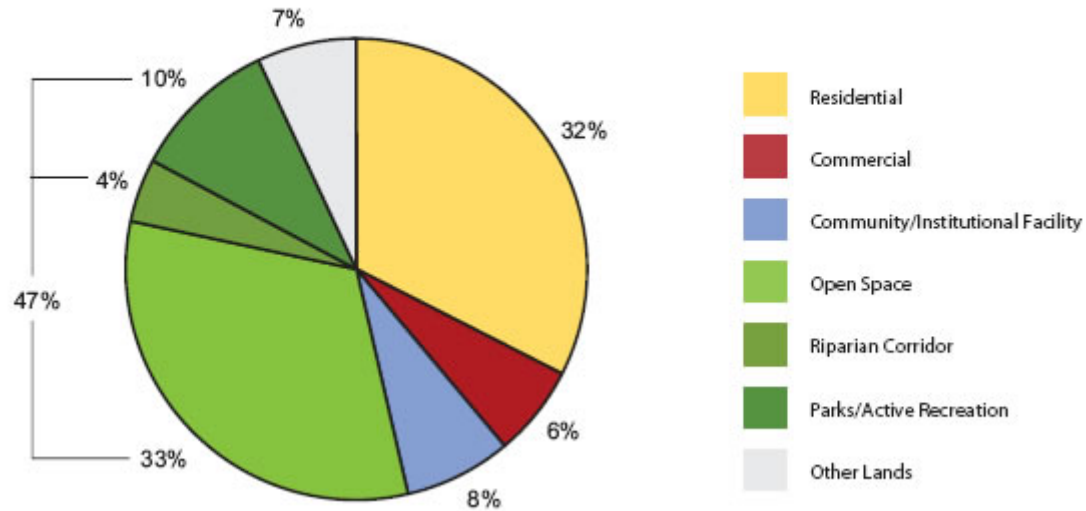
- An extension of Concord's present land-use pattern -- majority of homes are single-family homes at low density
- Open space / habitat conservation in the Los Medanos hills and Mt. Diablo Creek
- Relatively low densities created challenges for encouraging walking, bicycling and transit use
- Some higher intensity of uses around the BART station will encourage transit use for those living and working close to the station
- Dependence on private vehicles for residents and for workers
- 85% single-family and 15% multi-family residential development including town homes, apartments, and condominiums

## Land Use Map



## Land Use Graph

### Program Summary: Land Use



## Residential Breakdown

### Residential Breakdown

