

Alternative Concept 4: Concord Park “Bringing the Park to the City”

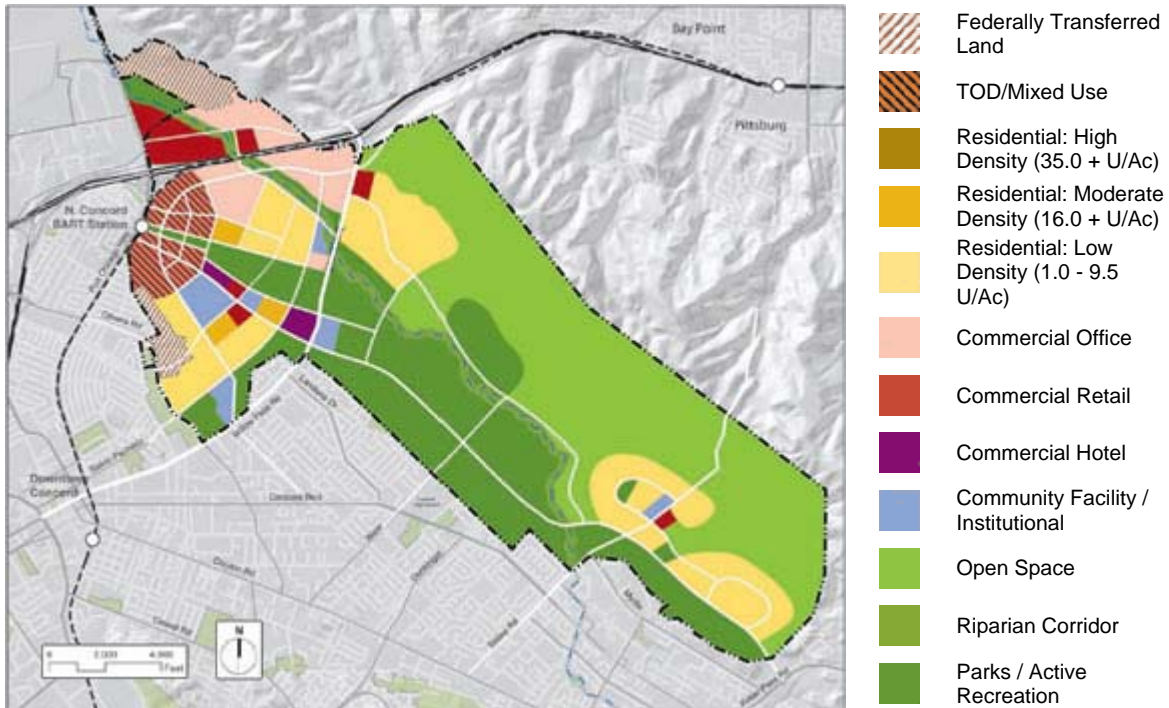
Overview

Signature parks east and west of Mt. Diablo Creek are a key feature of this alternative concept. As such, this alternative concept suggests bringing the park to the City, extending all the way to the existing City edge and framing these parks with development areas. The City-wide park and open space would be expected to have an area-wide draw.

Transit loops provide service to developed areas north of Willow Pass Road, connecting these new neighborhoods with BART and downtown Concord. South of Willow Pass Road, lower density single family residential units limit the opportunity for supporting transit services.

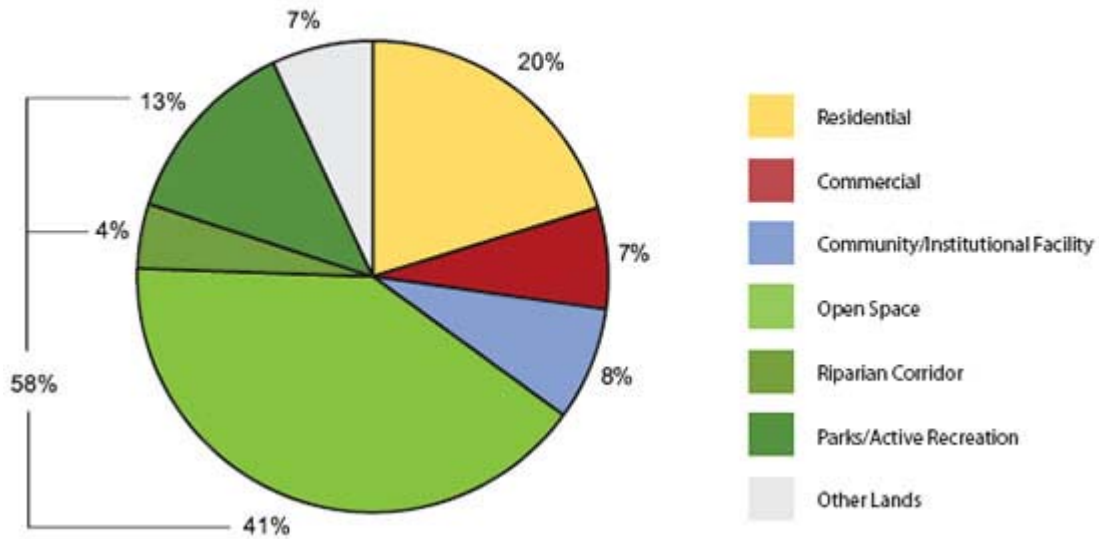
- Parks meet nature – with formal park/recreation areas flanking and bridging the creek
- Open space on the ridgeline and creek with added green links, city parks and recreation corridors linking to expanded open space all the way to the City edge
- Lower density uses near Bailey Road/Kirker Pass Road
- Major focus on transit oriented development at BART with mixed use housing and jobs
- 55% single family and 45% multi-family residential development including town homes, apartments, and condominiums
- Choice of transportation modes for residents and for workers at the northern part of the site with the rest of the site dependent on private vehicles

Land Use Map



Land Use Graph

Program Summary: Land Use



Residential Breakdown

Residential Breakdown

