

Alternative Concept 6: West Side Villages

Overview

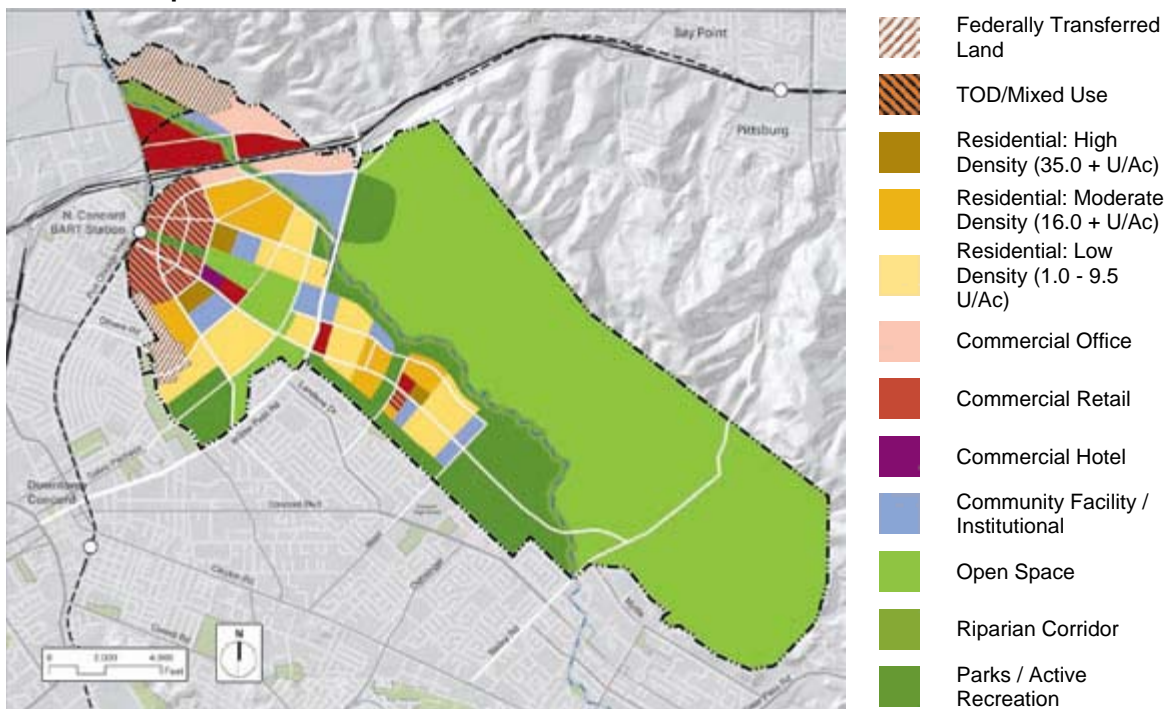
Alternative Concept 6 would focus development west of Mt. Diablo Creek and north of Willow Pass Road, creating a contiguous open space and conservation area east of Mt. Diablo Creek. Development would be concentrated near the BART station, north of Highway 4 and Willow Pass Road, and in two transit-accessible mixed use residential villages south of Willow Pass Road and west of the creek.

This alternative would include a linear urban park on the western edge of the site adjacent to existing Concord neighborhoods. This park is intended to provide recreational facilities for the broader community as well as serving as an expanded buffer to existing development.

A high capacity bus transit service would connect the area north of Willow Pass Road and the residential villages south of Willow Pass Road with BART and downtown.

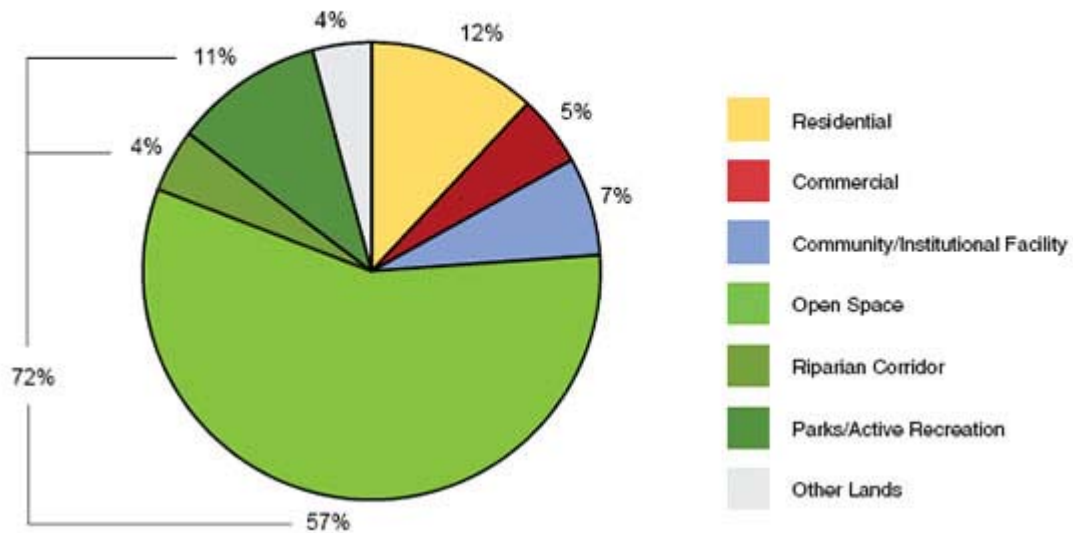
- Focuses development and creates a significant amount of open space
- Open space on the ridgeline and creek, with more than two thirds of the site in open space use and recreational facilities near existing neighborhoods
- Major focus on dense transit-oriented development at BART, with mixed-use housing and jobs, with linkages to residential villages
- 30% single family and 70% multi-family residential development including town homes, apartments, and condominiums
- Choice of transportation modes for residents and for workers at the northern part of the site and for residents in the mixed use residential villages

Land Use Map



Land Use Graph

Program Summary: Land Use



Residential Breakdown

Residential Breakdown

